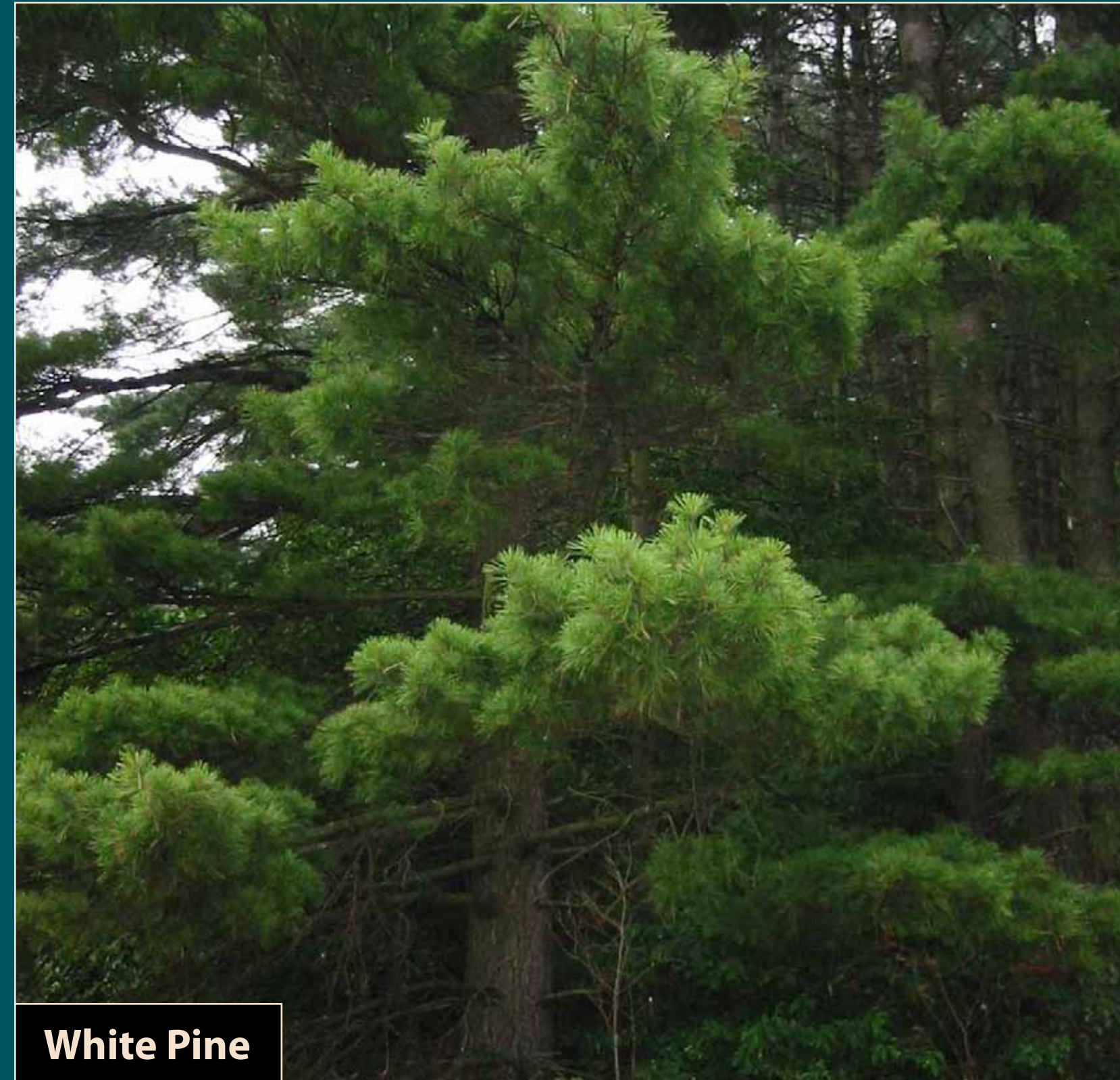


The Riparian Forest: Cool and Beautiful

Camp DREAM
 Ways of Water
 Interpretive Trail



White Pine

Take a look around—and don't forget to look up! Do you notice that some trees have leaves and some have needles? This is because there is a mix of deciduous and coniferous trees. Do you know which is which? Coniferous trees have needles and they produce cones (like pine cones). You can remember that *coniferous* and *cones* both start with "con." On the other hand, "D" stands for *deciduous* trees that *drop* their leaves in the fall.

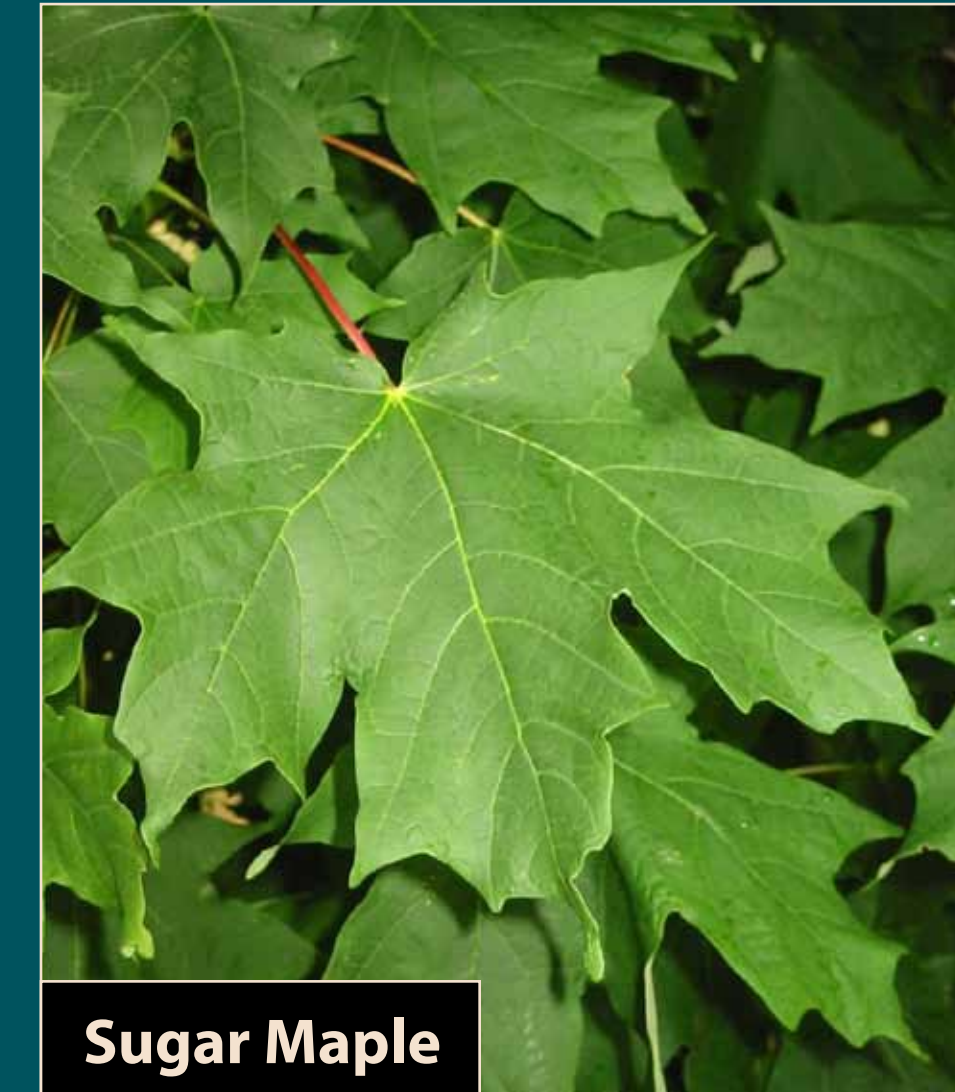
Thanks to the different types of trees here, Camp DREAM stays cool, damp, and shady all year round. These trees are in a riparian forest, a wooded area next to water like a stream or pond. They help maintain water quality and a healthy ecosystem for plants and animals.



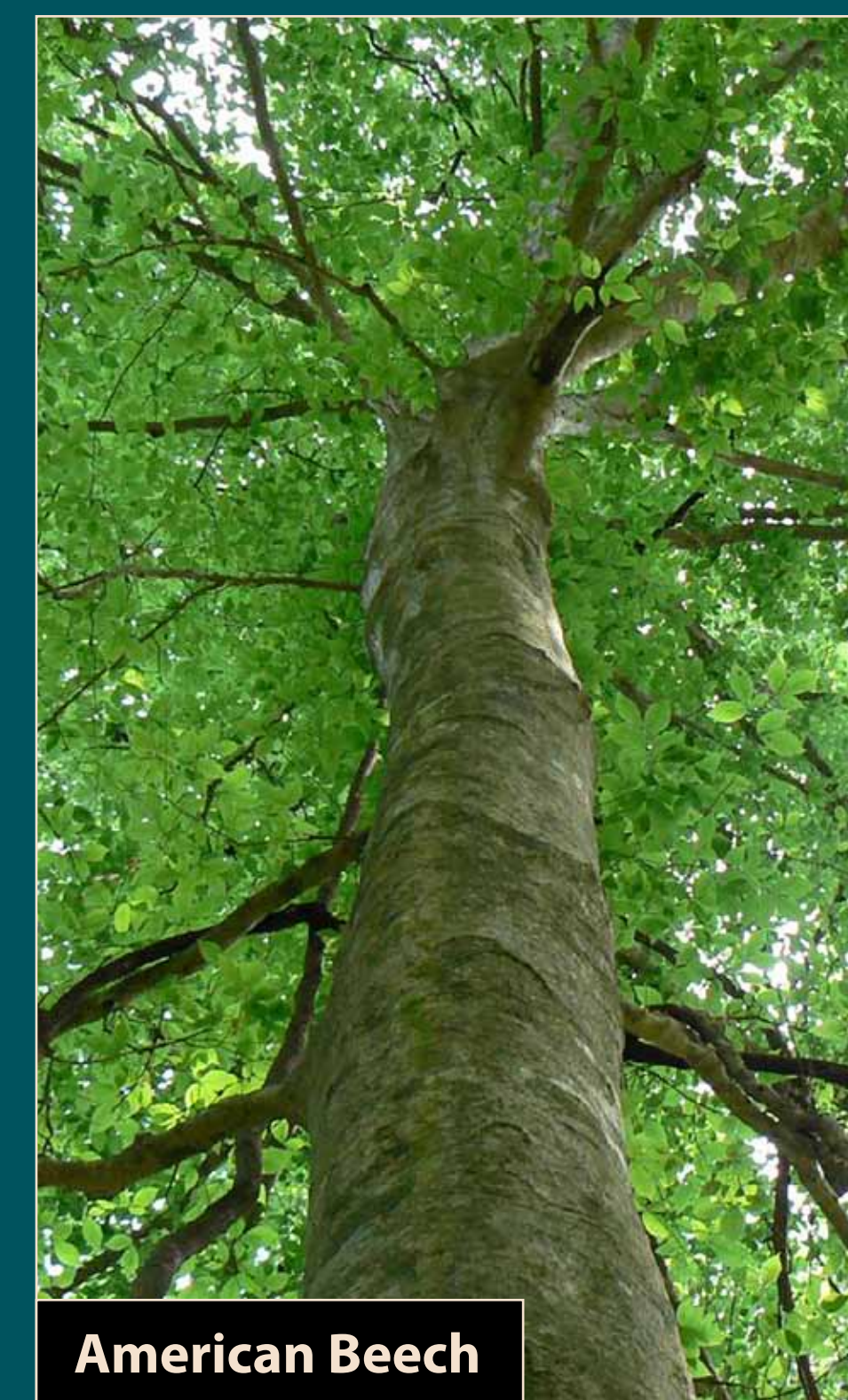
White Pine



American Beech



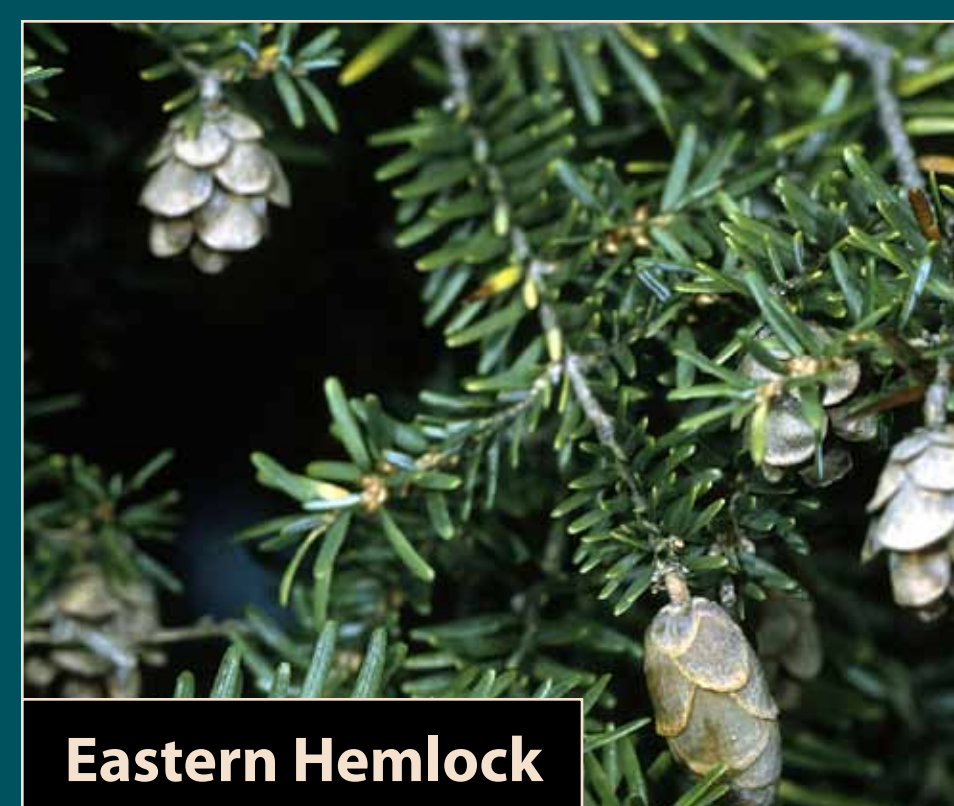
Sugar Maple



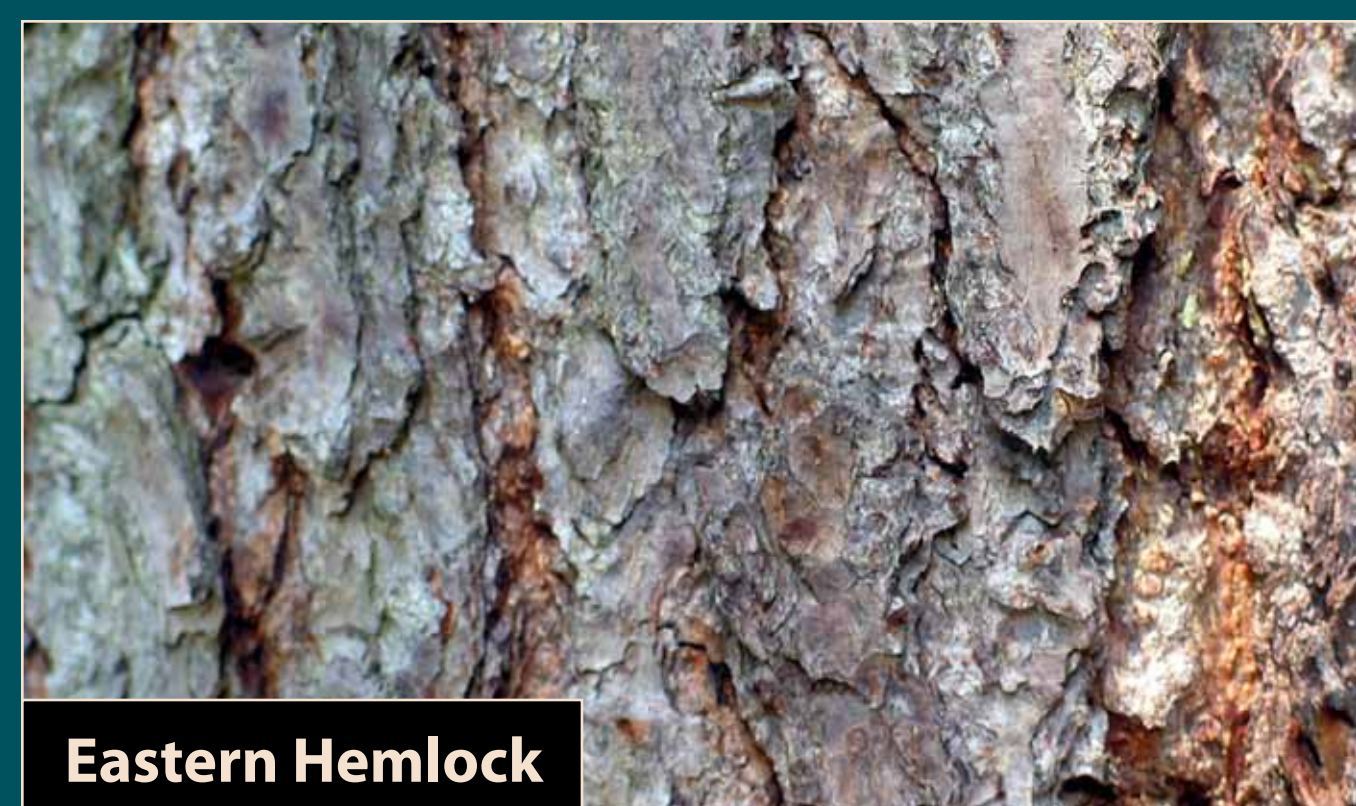
American Beech



Sugar Maple



Eastern Hemlock



Eastern Hemlock



Paper Birch



Paper Birch

