

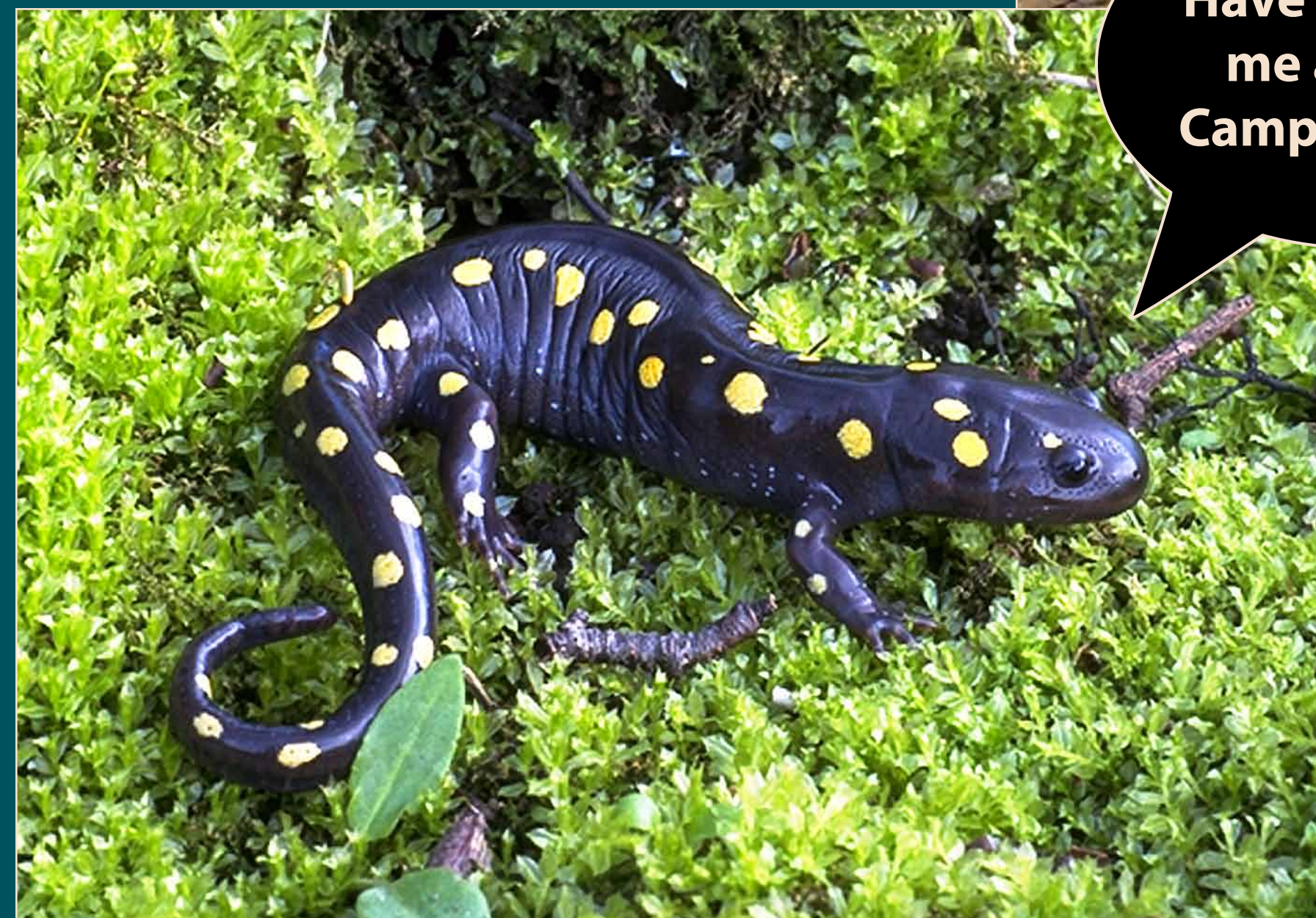
Vernal Pool: A Race Against Time

Camp DREAM
Ways of Water
Interpretive Trail



What do you see in front of you? A large puddle? A dip in the forest floor? Either of these characteristics could be true at different times of the year. This is the site of a vernal pool, a temporary pool of water that forms in the spring. Vernal pools are safe habitats for the eggs and young of many amphibians and insects – if they can grow up quickly! Because these pools often dry up by summer, fish cannot prey on their inhabitants.

Despite being dry for most of the year, once this vernal pool fills with water from snow melt and rain in the spring, it teems with life.



Yellow Spotted Salamanders depend on vernal pools for breeding and laying eggs. These salamanders return to the same vernal pool every spring for their entire lives – up to 20 years! They can grow to be 7.5 inches long and have unique healing qualities. Salamanders can detach their tails to distract predators. If a leg, tail, or even parts of their head are torn off, they can re-grow them to their natural state! If you are lucky, you may see one of these incredible creatures at Camp DREAM.

