

Welcome to Camp DREAM!

Camp DREAM Ways of Water Interpretive Trail



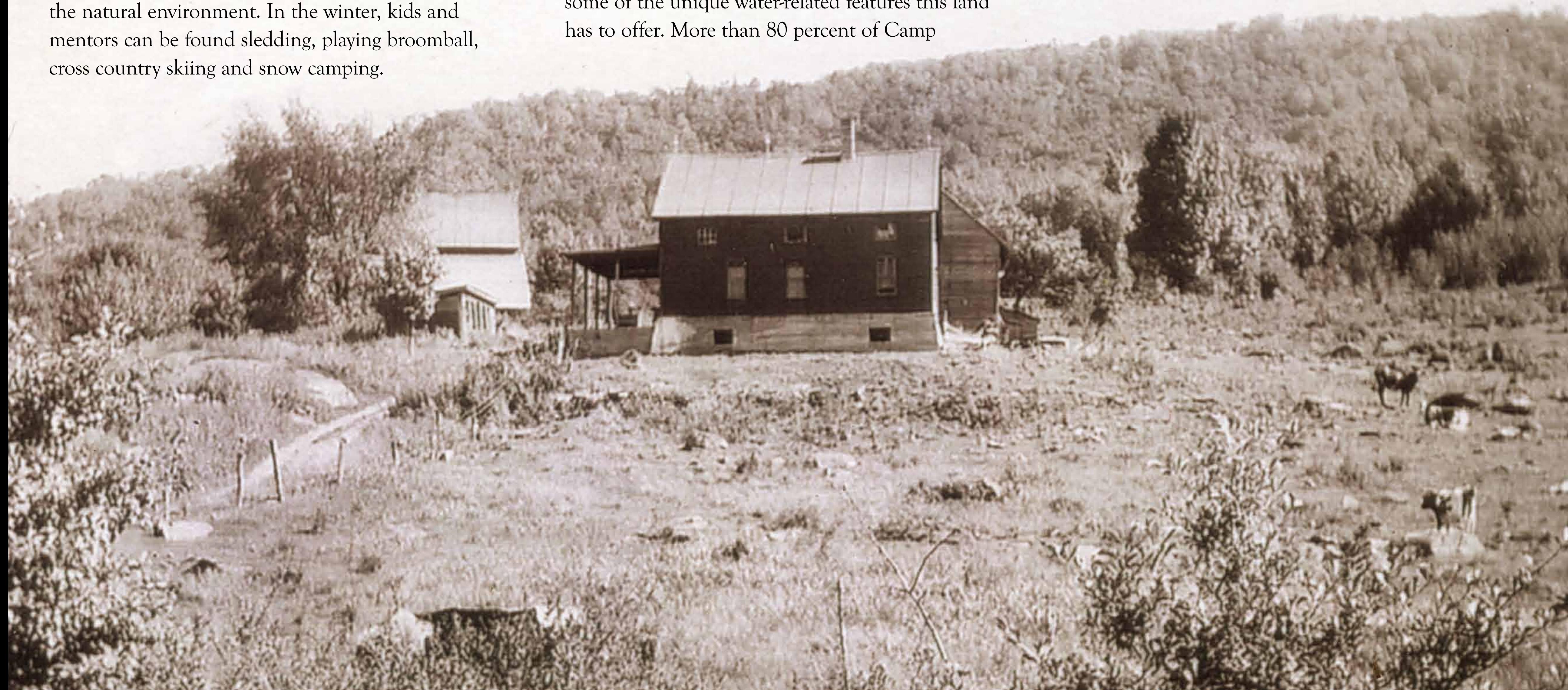
The DREAM Program, Inc. is a non-profit mentoring program that pairs college students with children living in affordable housing neighborhoods. DREAM empowers children to recognize their options, make informed decisions, and achieve their dreams. Since 2004, Camp DREAM has offered free, innovative, and inspiring summer and winter camp experiences to children throughout Vermont, allowing them to build a sense of caring for community, environment, and themselves. In the summer, DREAMers spend time swimming, canoeing, hiking, gardening, and exploring the natural environment. In the winter, kids and mentors can be found sledding, playing broomball, cross country skiing and snow camping.

Countless hours spent by volunteers, staff, mentors, and kids have made Camp DREAM what it is today: a magical place that fosters growth, inspires creativity, and builds community. If you'd like to make a difference in a young Vermonter's life, visit the DREAM Program's website (dreamprogram.org) for more information.

Explore Camp DREAM

The Camp DREAM Ways of Water Interpretive Trail explores these 50 acres, with six stops that highlight some of the unique water-related features this land has to offer. More than 80 percent of Camp

DREAM remains undeveloped, thanks to the Vermont Land Trust, which helped to purchase the land in order to conserve and protect it from future development. This trail and its educational components were made possible by volunteers from IBM. The creativity, resourcefulness, and support of these generous people has contributed greatly to the Camp DREAM that exists today. Camp DREAM is an example of how Vermonters can work together to protect our natural heritage while living and learning in a beautiful outdoor environment.



Camp DREAM was once a farm. The photo above shows the view from here in the early 1900s. What has changed? As you explore Camp, look for stone walls that used to border

open pastures. You can find the old foundations at the homestead that once held the farmhouse and barns. See if you can spot the rusted tools once used by farmers and their

families. The land itself has changed over the years; once cleared for sheep and cattle grazing, it is now a quiet forest for you to enjoy.

